



FLORIDA SOLAR ENERGY CENTER®

*Creating Energy Independence*

# **Evaluating Moisture Control of Variable Capacity Heat Pumps in Mechanically-Ventilated, Energy-Efficient Homes.**

***Charles Withers, Jr.***

***Renewable Energy Systems and Sustainability Conference 2017***

***Lakeland, FL***

***August 1, 2017***





# Bringing Housing Innovations to Market

**BUILDING AMERICA  
SOLUTION CENTER**  
BASC.ENERGY.GOV

Building best practices  
at your fingertips.



[www.buildingamerica.gov](http://www.buildingamerica.gov)

# Introduction

- Tighter construction = less natural ventilation.
  - Whole-house mech. vent. more important
- Better insulation and windows decreases cooling.
- Results in more difficulty managing moisture.
- Potential Issues- comfort, building damage, health

# Introduction

- Variable Capacity (VC) heat pumps vary output of heat/cool.
  - Variable outdoor compressor speed and refrigerant
  - Variable indoor fan flow
  - Quiet
  - Long runtime
  - Energy efficient

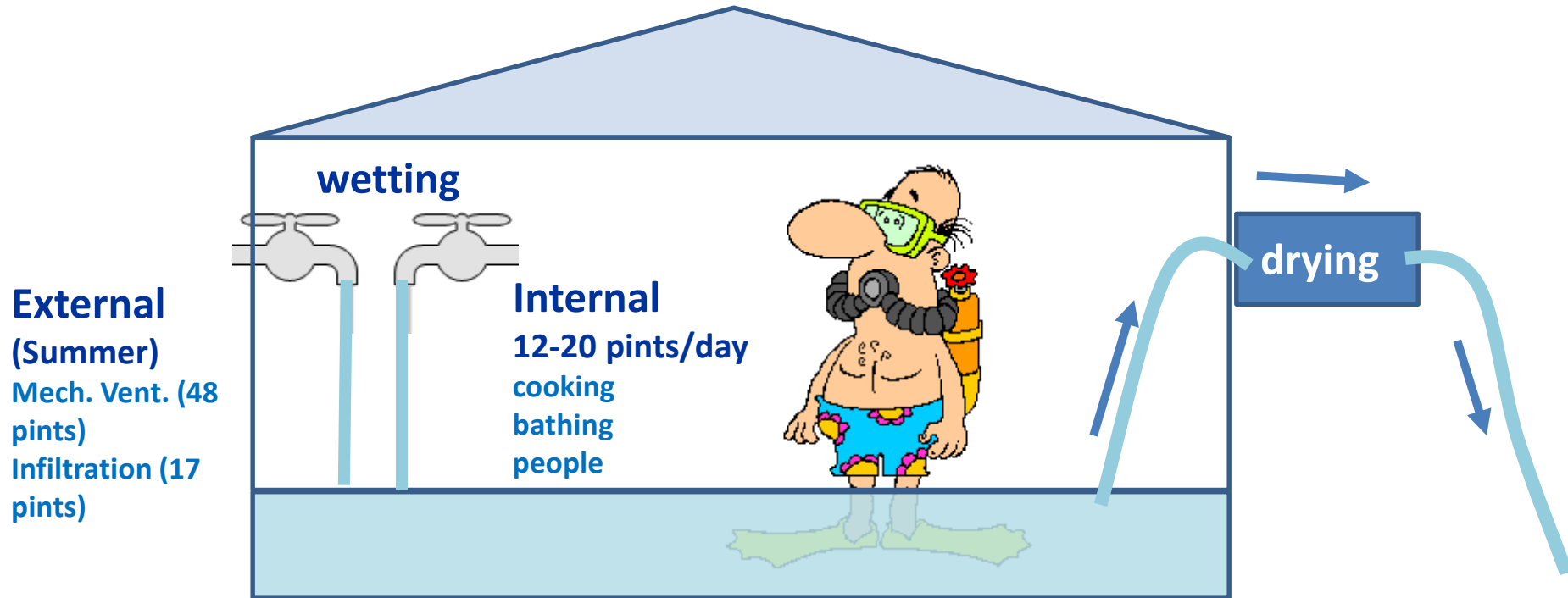


# Ductless Mini-split Heat Pump Shown with a Dehumidifier



# Effective Moisture Control Requires a Balance Between Wetting and Drying Processes

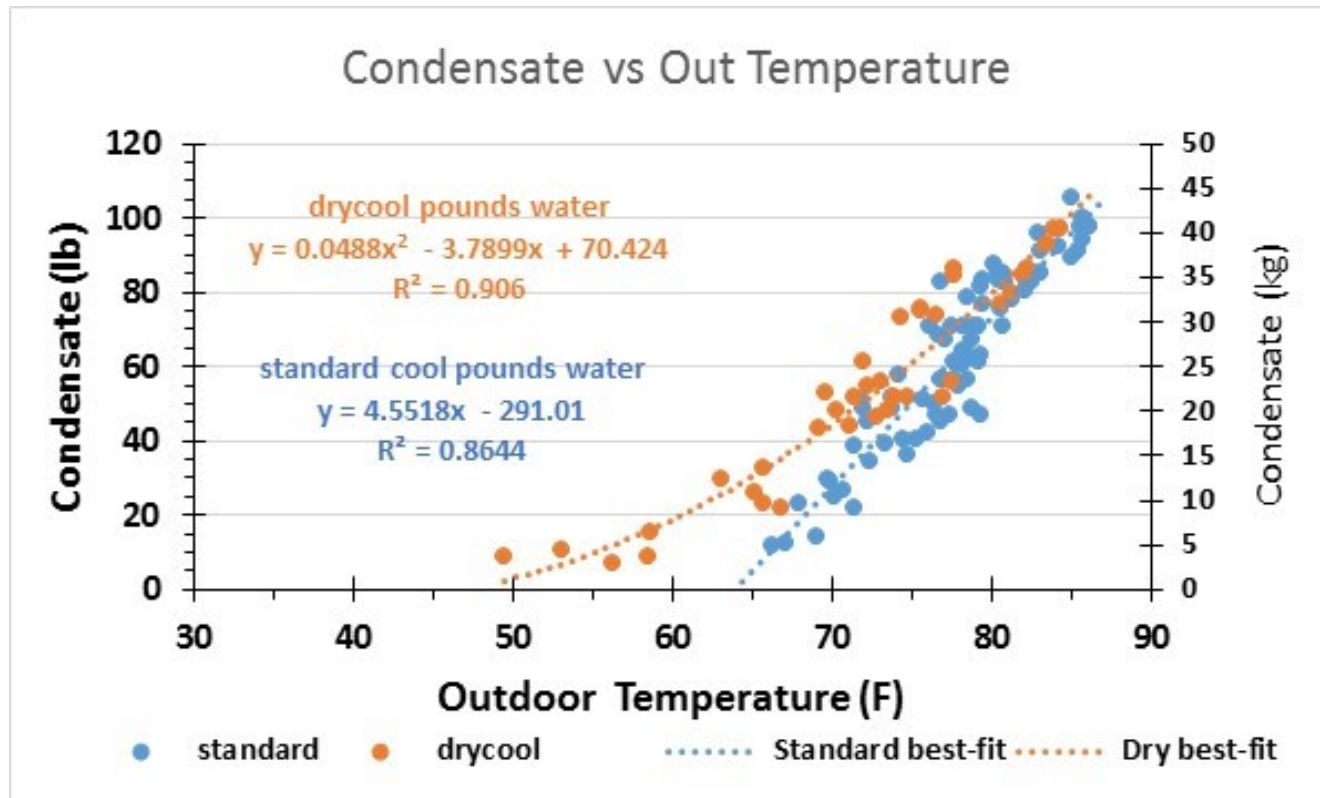
About 9.6 – 10.6 gallons (36.3-40.1 liters) of water needs to be removed from air each summer day.



# House Lab and Residential Field Study

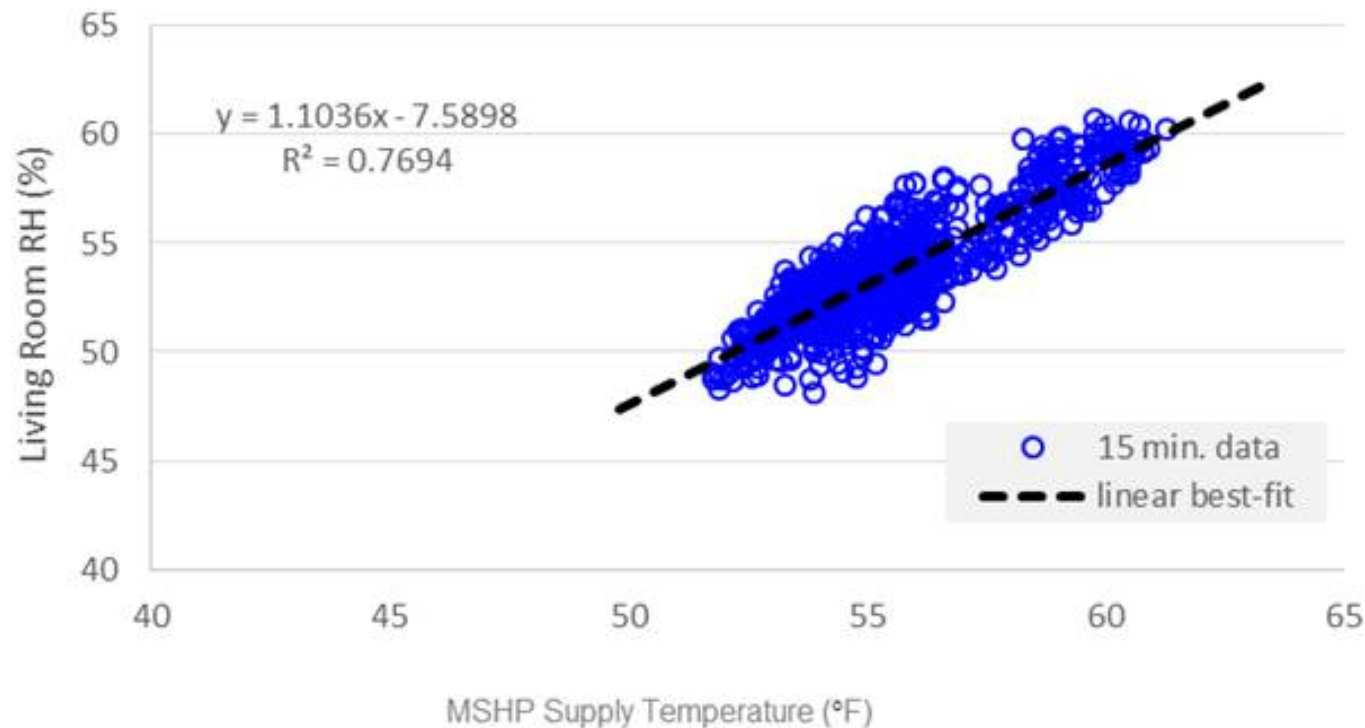


# Warmer Weather Results in More Moisture Removed From Indoors



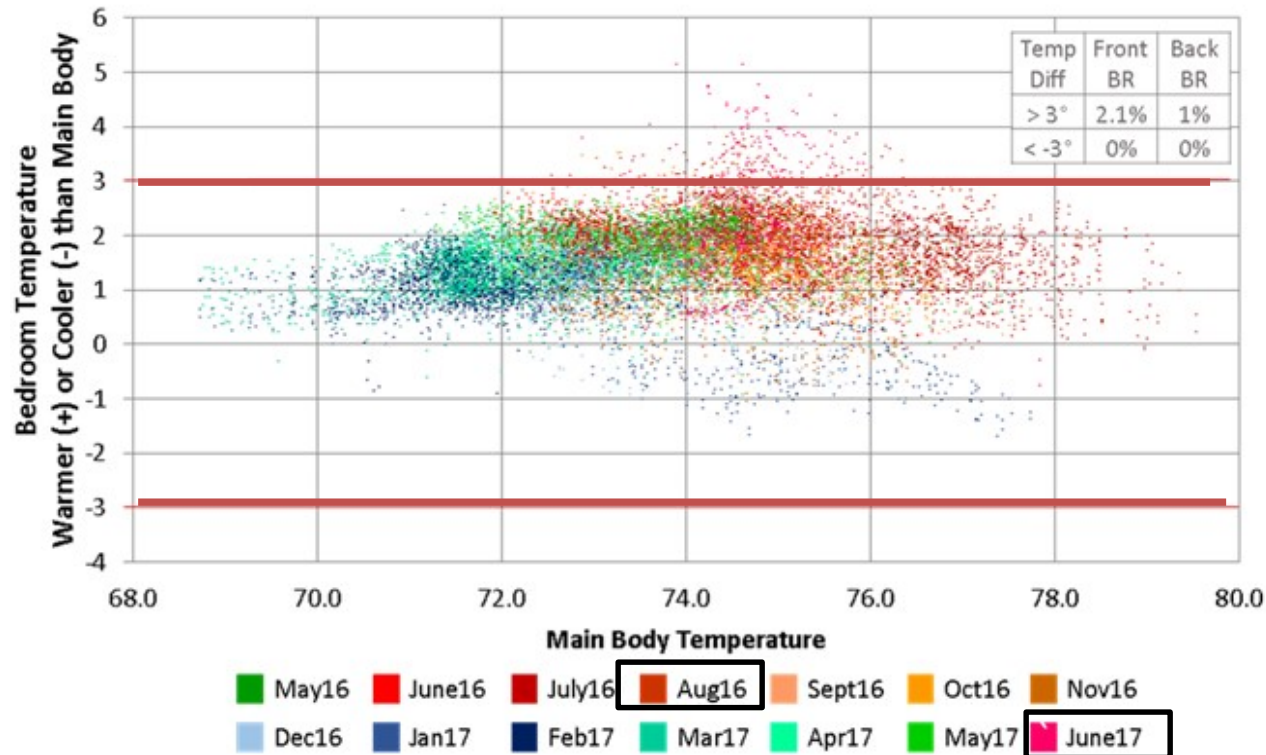


# Colder Supply Temperature Results in Lower Indoor RH



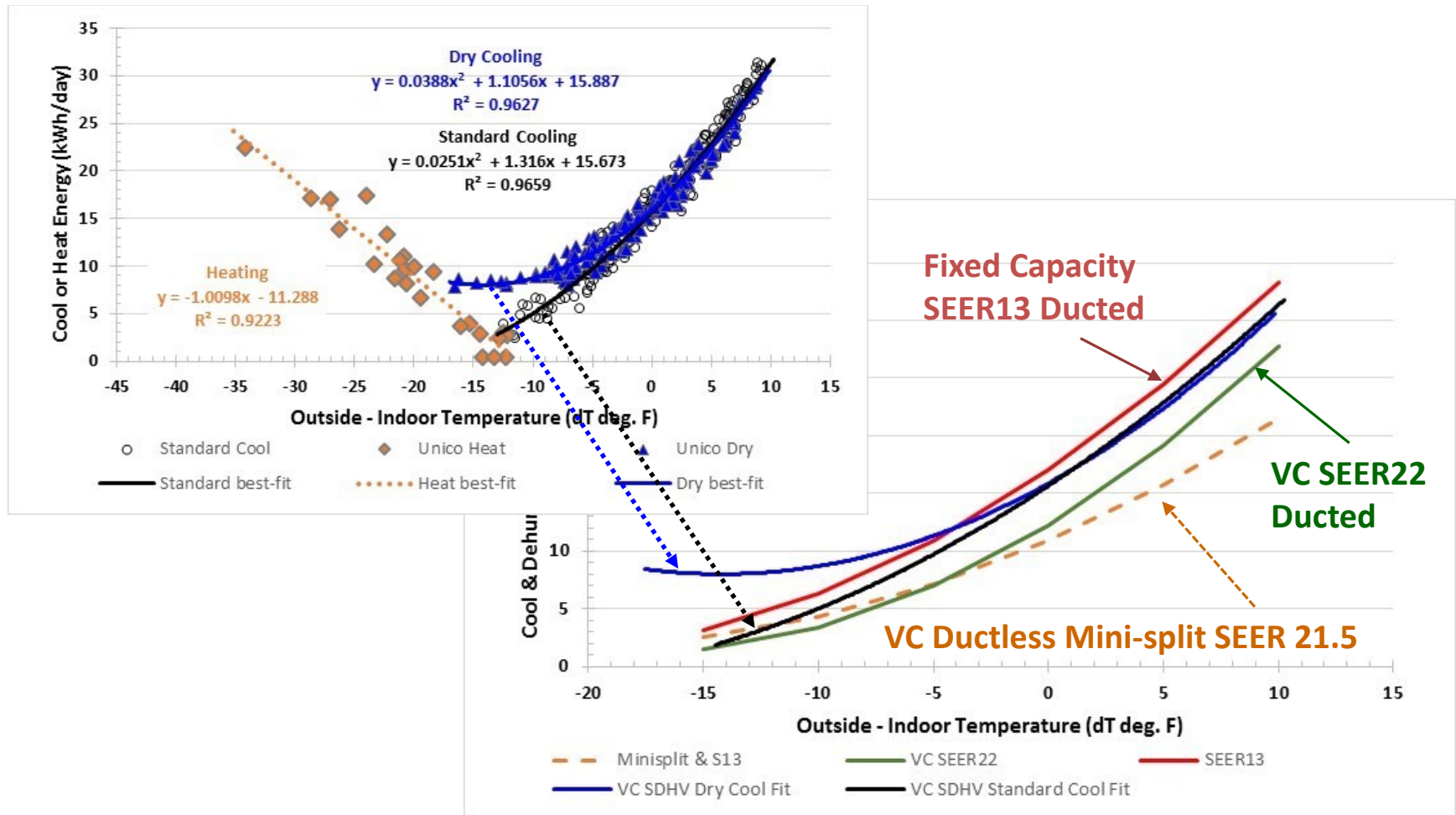
# Thermal Control

Thermal distribution was acceptable from all tested VC systems.  
*dT>3F Only 1.4% of time for 11 bedrooms in 4 homes (prefer indoor about 76F).*



**Average hourly temperature difference between SEV1 bedrooms and the main body**

# House Lab Space Conditioning Energy



# Potential Daily Cooling Energy Savings from Fixed Capacity to Variable Capacity (Central Ducted Systems)

Lab Test Configuration	SEER 13 FC kWh/day	SEER 14 VC kWh/day (%)	SEER 22 VC kWh/day (%)
OA Near Central Return; Dehumidifier Enabled @ 60% RH	24.4	22.4	19.2
Savings Relative to SEER 13	---	2.0 <b>(8.2%)</b>	5.2 <b>(21.3%)</b>
Savings Relative to SEER 14	---	---	3.2 <b>(14.3%)</b>

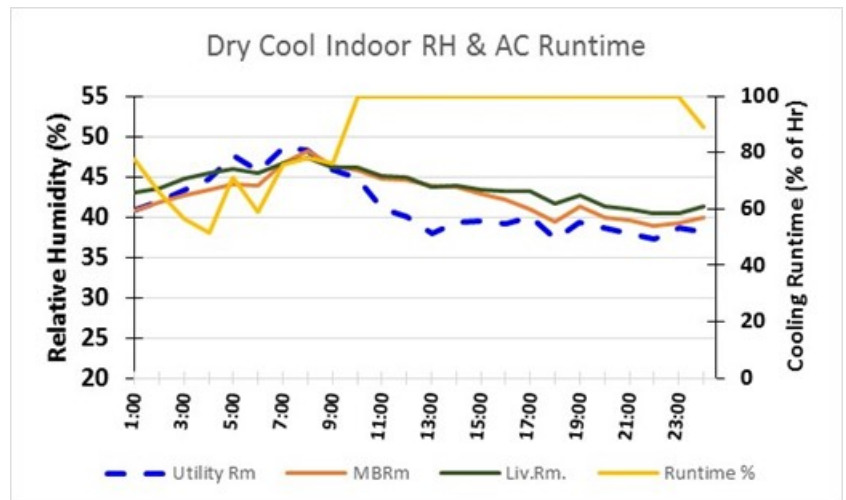
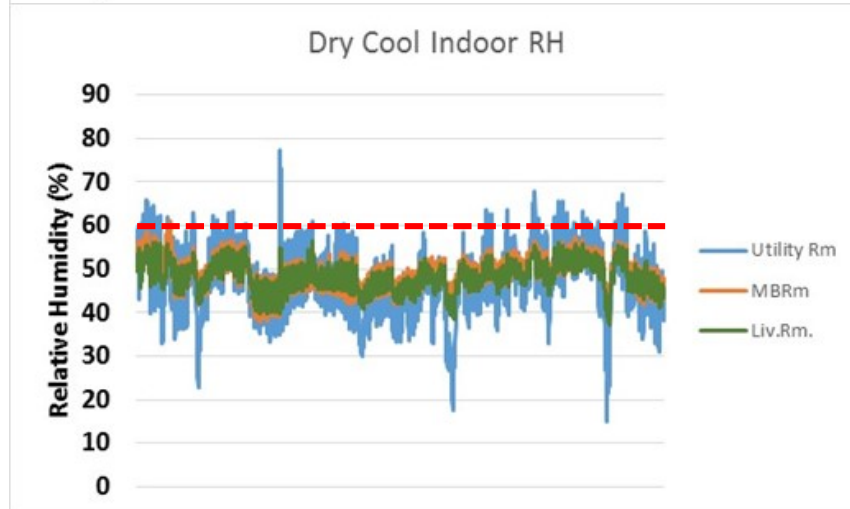
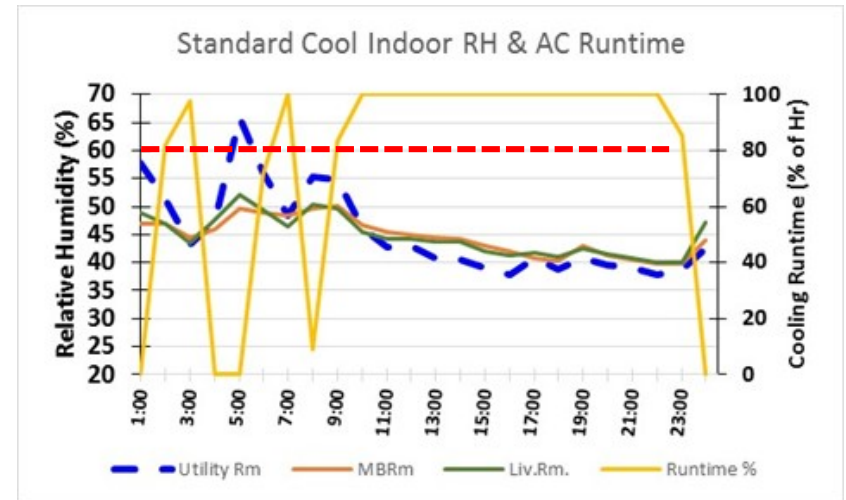
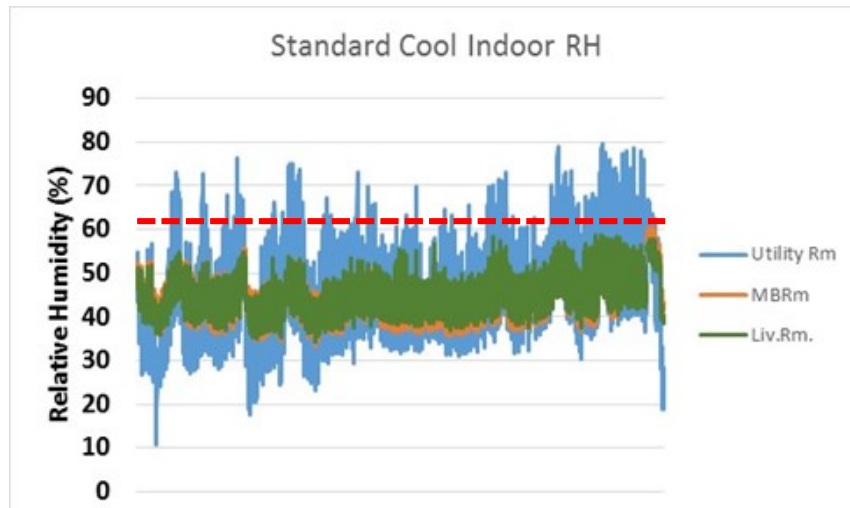
*Daily Space Conditioning Energy for a Typical Summer Day with  $dT = 5^{\circ}F$*

# Predicted Annual Cooling Energy, Peak Cooling Power, Use and Savings

(Savings Relative to Ducted FC SEER 13)

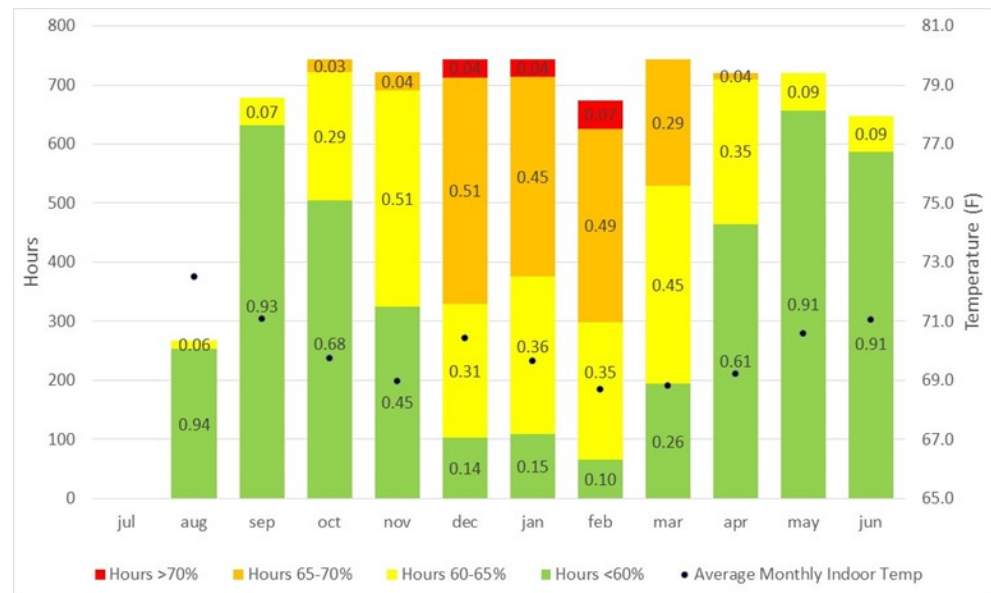
Test Case	Annual kWh (Mbtu)	Annual Savings kWh/yr (Mbtu), %	Peak kW (kBtu/h)	Peak Reduction kW (kBtu/h), %
1 Ducted Fixed Cap. SEER 13; DH	4820 (16.45)	---	2.04 (6.97)	---
2 Ducted Variable Cap. SEER 22; DH	3743 (12.77)	1078 (3.68) <b>22.4%</b>	1.56 (5.33)	<b>0.48</b> (1.64) <b>23.5%</b>
3 Ductless MSHP SEER 21.5; no DH	3224 (1.10)	1596 (5.45) <b>33.1%</b>	1.49 (5.09)	<b>0.55</b> (1.88) <b>27.0%</b>

# House Lab RH Control



# Field Study RH Control

- High frequency in hourly average RH >60%.
  - Assoc. with overnight and seasonal low-load periods
  - -with elevated supply air temp. (high SHR during low-load)
- RH maintained low enough to avoid high potential for health or durability issues.
- No reported comfort complaints from occupants.



Average hourly RH and monthly average temperature in SS2

# Conclusion

- Field studies indicate VC not controlling RH <70% well-enough during low-load periods in mech. vent. homes. RH >70% control OK.
- Lab study of SDHV VC system shows VC can manage RH well and may be able to maintain all hours below 50% RH with improved DRY cool mode.
- VC provided good thermal distribution.
- VC cooling savings range from 8% to 33% compared to Fixed Cap (VC SEER 14 lowest and VC MSHP SEER 21.5 ductless highest).



# Conclusion

Variability of indoor RH levels primarily from variability of:

- Mechanical Ventilation Rates
- Internal Moisture Generation
- Cooling SHR of Air Conditioning



# Summary

## VC Great Potential and Needs Improved

- Need improved algorithms & control architecture to improve Dry modes.
  - Need to maintain colder coil during low load and decrease SHR.
  - Need to utilize lowest capacity over longer periods during low load.

# Summary

## VC Great Potential and Needs Improved

- Cooling should prioritize efficiency over RH control in STANDARD mode.
- Prioritize RH control over efficiency in DRY mode.
- Use RH sensor to intelligently move back into high efficiency when RH low enough.

# Thank You

**Chuck Withers**

[chuck@fsec.ucf.edu](mailto:chuck@fsec.ucf.edu)



Search publications at:

[www.fsec.ucf.edu](http://www.fsec.ucf.edu)