

# Energy Conservation Kits



600  
Participants



# One-hour Classroom Session





\$200  
Value



Up to  
\$1200 in savings

# CONTRACTOR TRAINING



# EVALUATION AND FOLLOW-UP

## PINELLAS ENERGY EFFICIENCY PROJECT

By providing your email address below you are agreeing to participate in the Pinellas Energy Efficiency Research Project information and receive no more than 3 emails about your energy use.



RECOVERY.GOV

**Turning Point**

**Survey Monkey**

**Thinking Green**

**Extension Connection**





# PINELLAS ENERGY EFFICIENCY PROJECT



*O  
U  
T  
C  
O  
M  
E  
S*



RECOVERY.GOV

**60,000 CFLs**

**\$360,000**

**3 Million kWh**

**1,800 tons CO<sub>2</sub>**

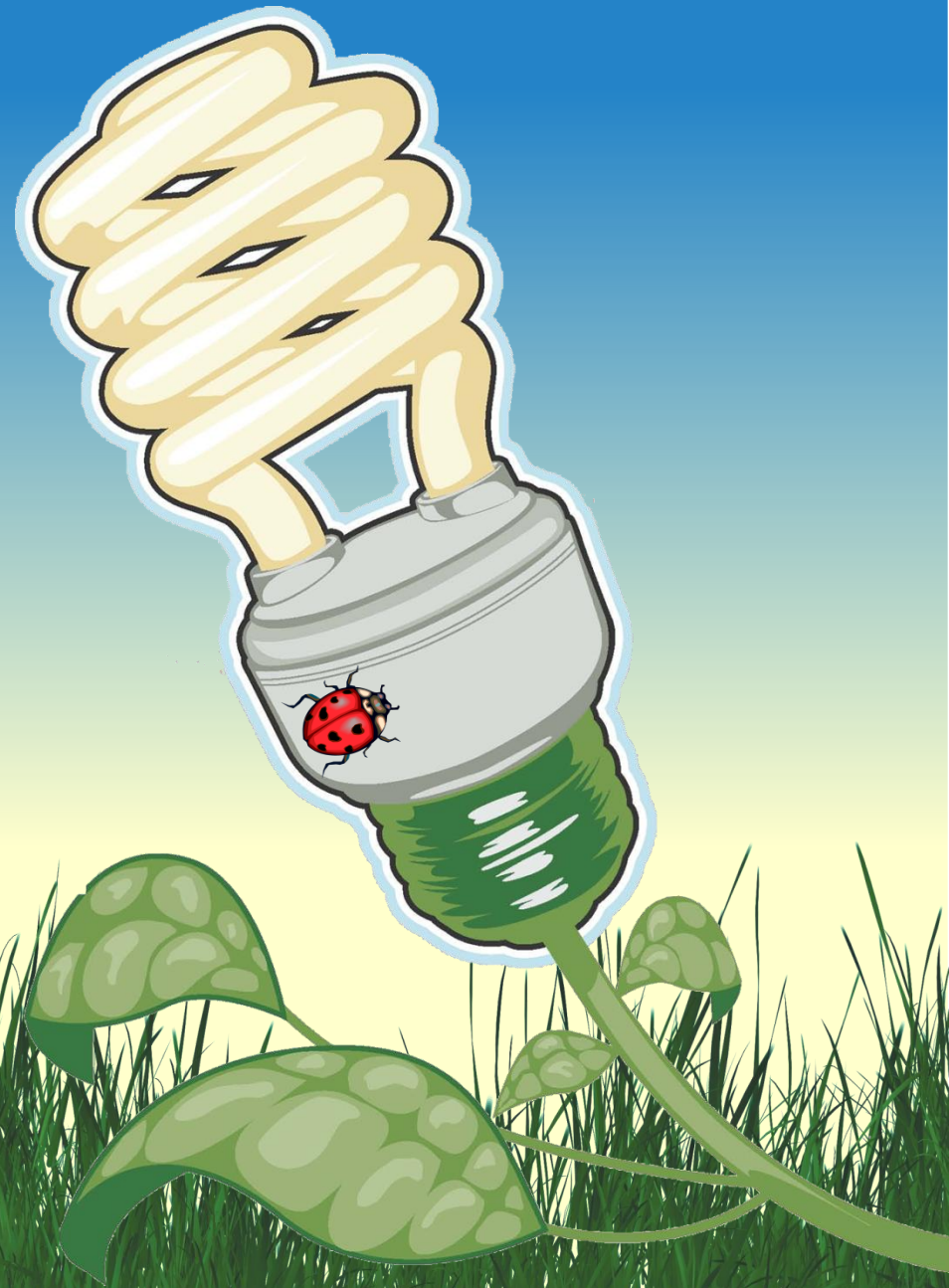



**165 participants**

**1178 bulbs**

**530,100 kWh**

**370 tons CO<sub>2</sub>**



A satellite-style map of the state of Florida with county boundaries overlaid. Three counties in the central-western part of the state are highlighted in a bright green color. The text is overlaid on the left side of the map.

**Tri-County Partnership  
Providing Contractor  
Training Via UF's  
Program for Resource  
Efficient Communities**

**3 classes**

**48 contractors**

**\$4800 fee savings**



Getting  
the  
message  
out!



# PINELLAS ENERGY EFFICIENCY PROJECT



The Power is Yours! Pinellas County Extension is providing valuable energy conservation information and equipment to Pinellas citizens. Project participants save money on their power bills and reduce our county's overall energy demand. Sponsorship comes from the US Department of Energy, as part of the American Recovery and Reinvestment Act of 2009.



RECOVERY.GOV

<http://pinellas.ifas.ufl.edu/sustainability/energy.shtml>

[http://pinellas.ifas.ufl.edu/sustainability/energy\\_peep.shtml](http://pinellas.ifas.ufl.edu/sustainability/energy_peep.shtml)



# Energy Conservation



P

E

E

P

The  
Power  
Is  
Yours!





Thank  
You!



Questions?

Ramona Madhosingh-Hector

[rmadhosingh-hector@pinellascounty.org](mailto:rmadhosingh-hector@pinellascounty.org)

