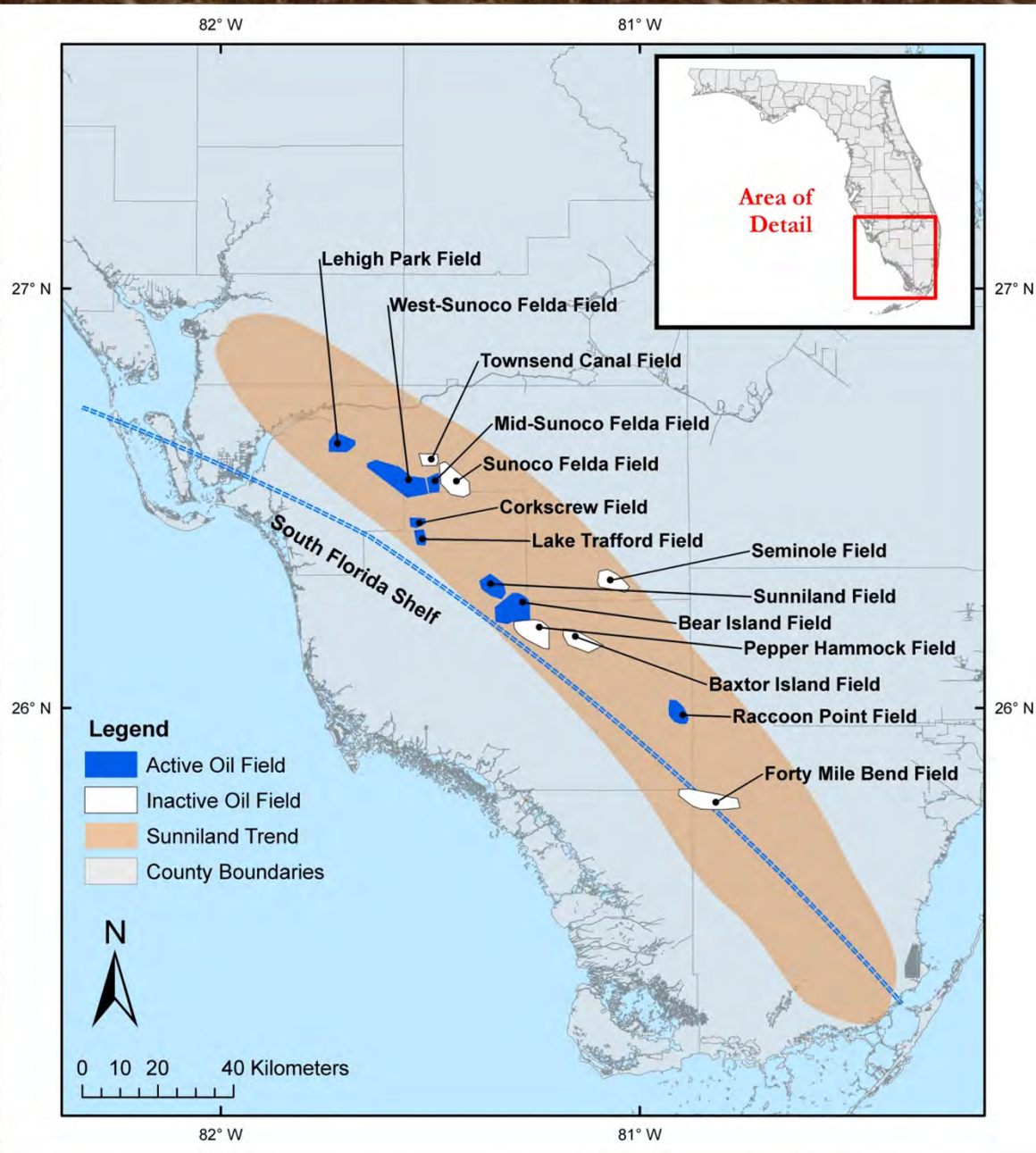


Evaluation of Deep Saline Aquifers of Central and South Florida for Geologic Carbon Sequestration

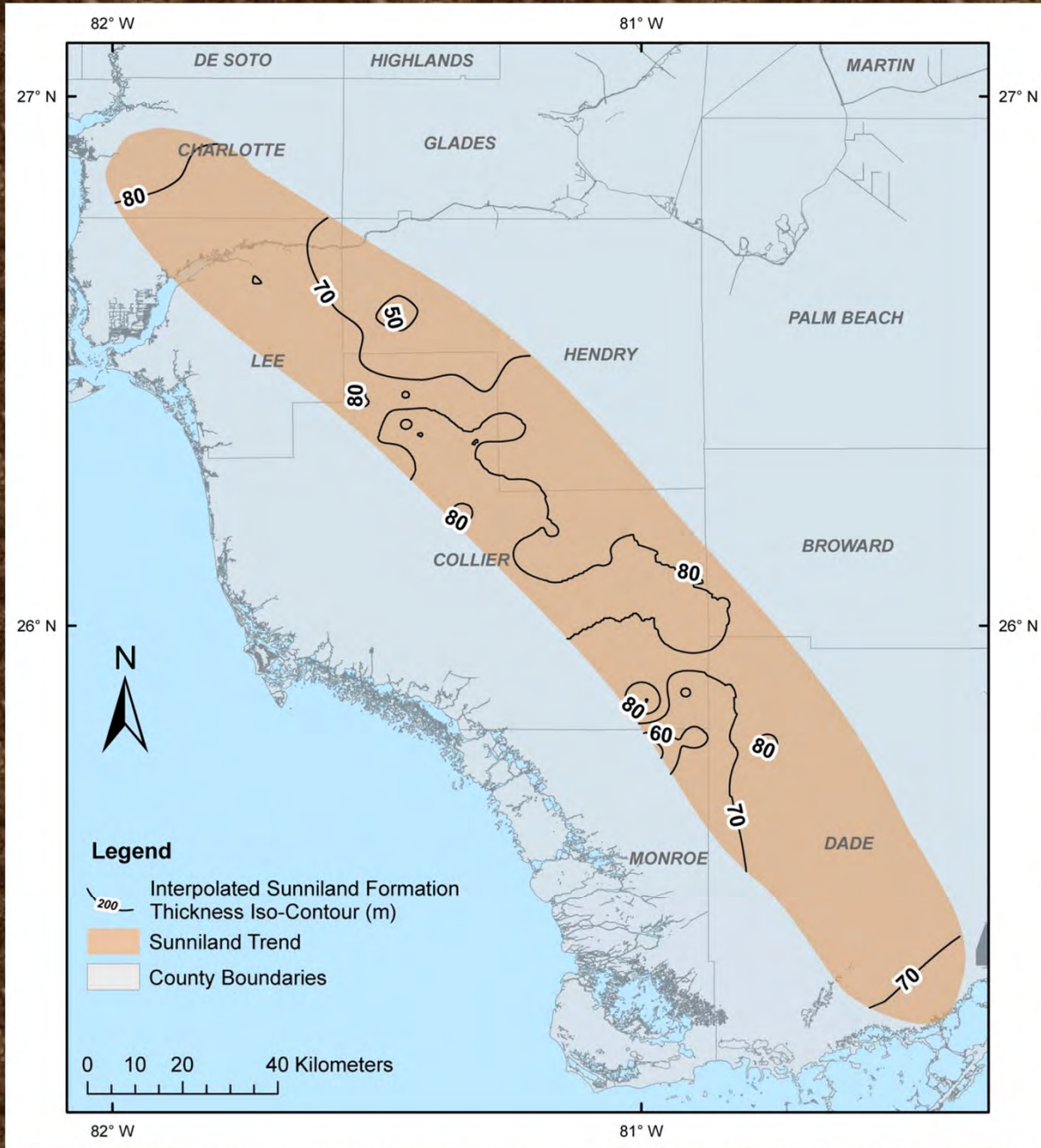
Tina Roberts-Ashby

Mark Stewart

University of South Florida
Florida Energy Systems Consortium



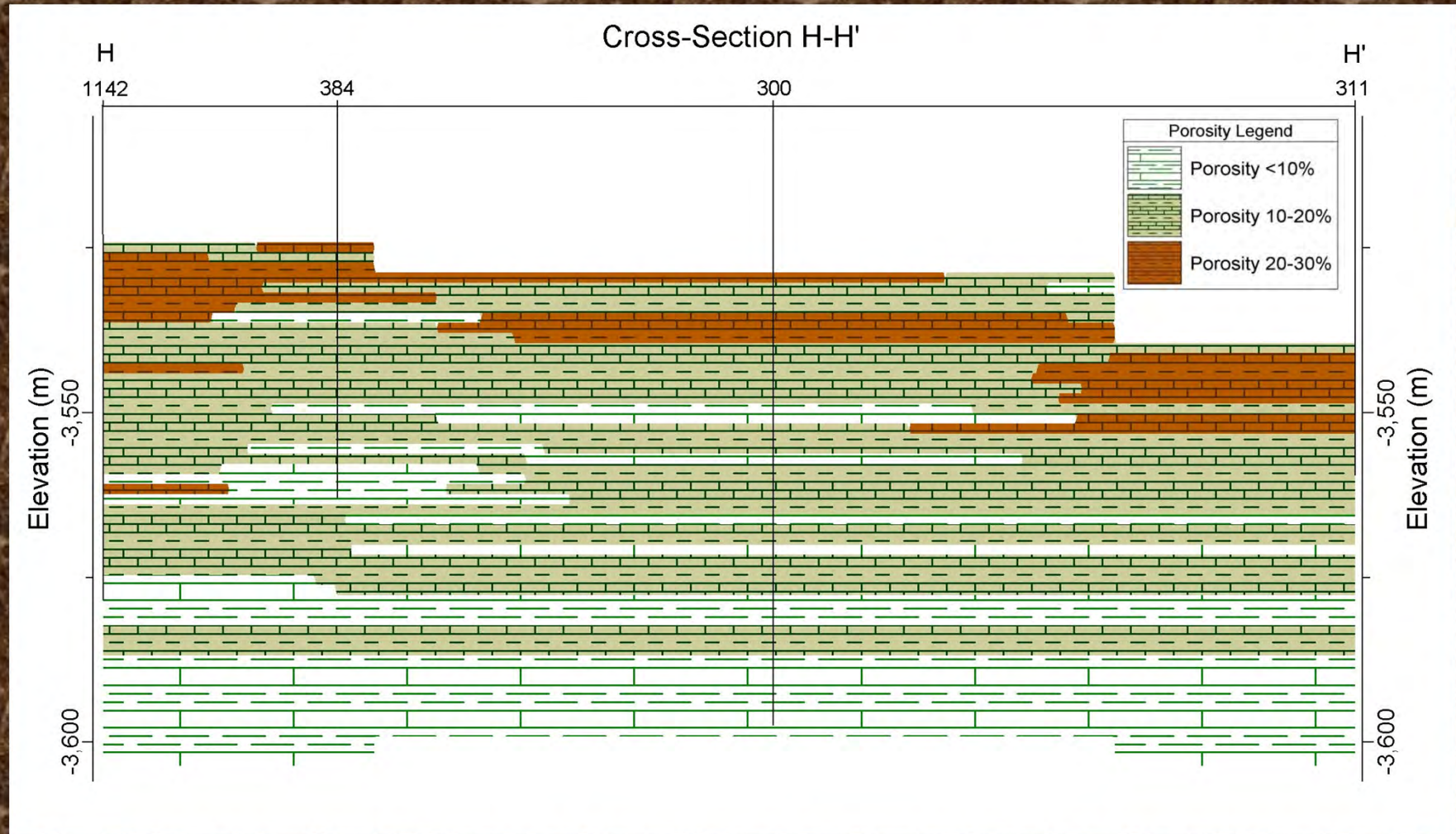
Sunniland Trend of the South Florida Basin

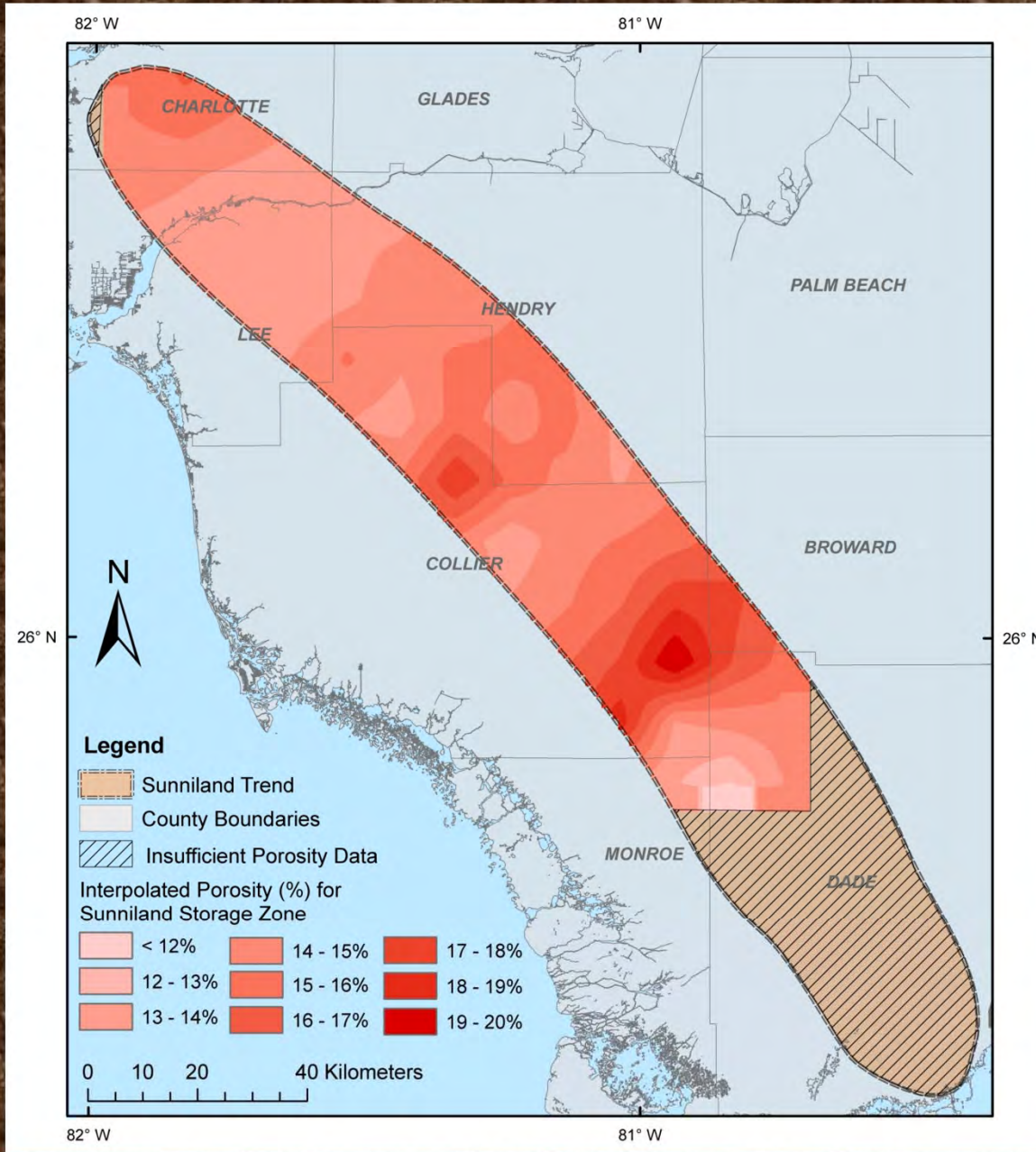


Thickness of
Sunniland
Formation
(m)

Average
thickness is
about 70 m

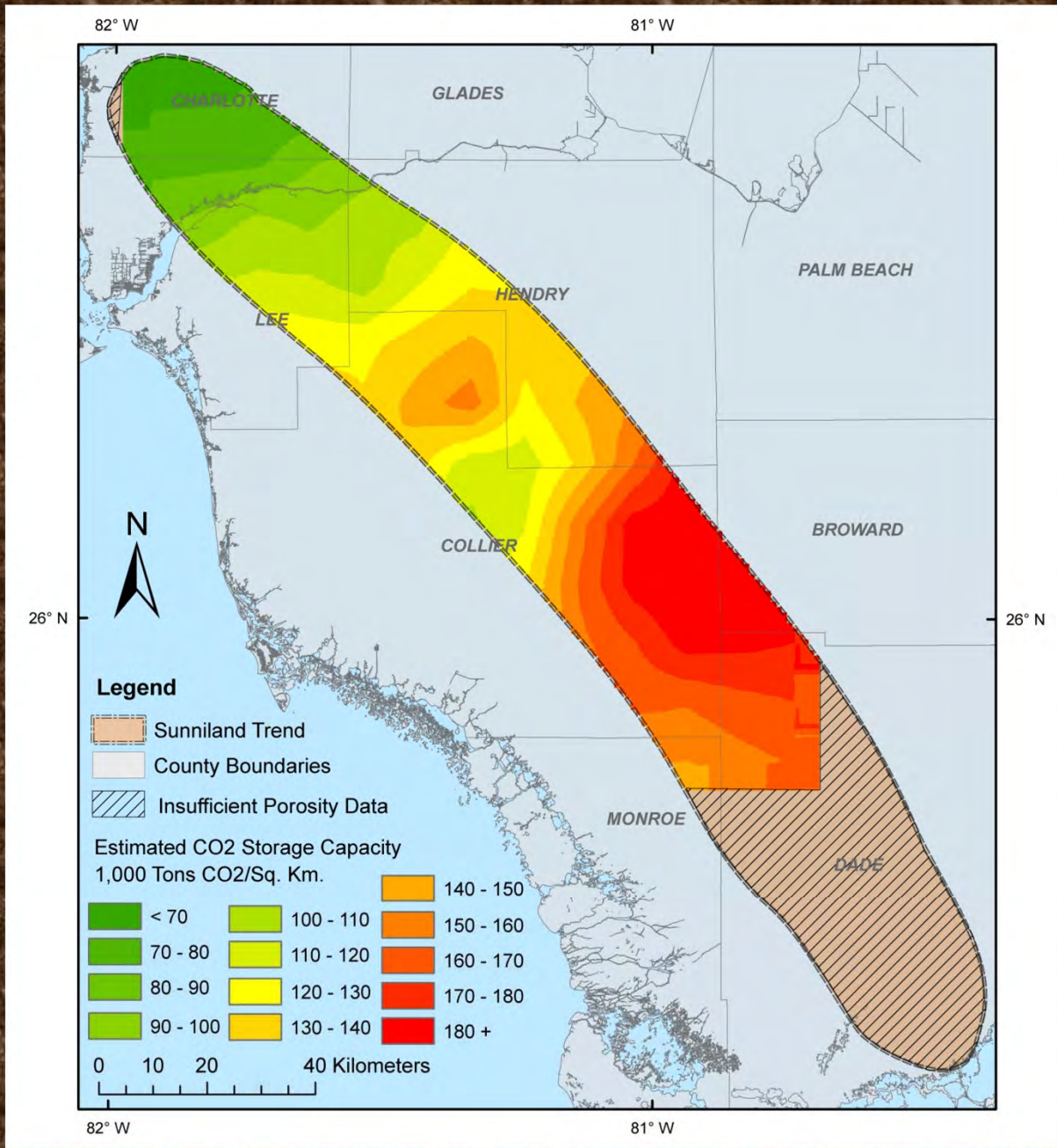
Interpolated Porosity Cross-Section for Sunniland Field





Interploated
Porosity for
the Sunniland
Formation

Most
porosities are
>15%



Estimated
CO₂ storage
capacity in
tons/km²